

Network Management Card

~Quick Installation Guide~

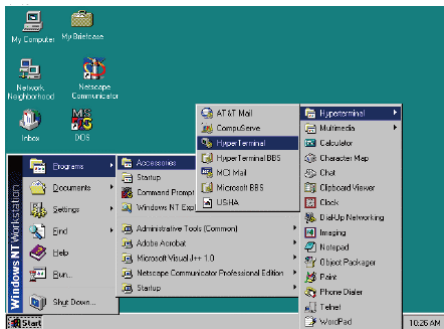
Network Management Card Hardware Installation:

1. Insert Card into the slot provided by UPS,
put the screws and tighten them.
2. Procure a Windows computer.
3. Use the RJ45 to DB9 female serial cable that provided
from package connects between the NMC COM port
and the COM port on the workstation.

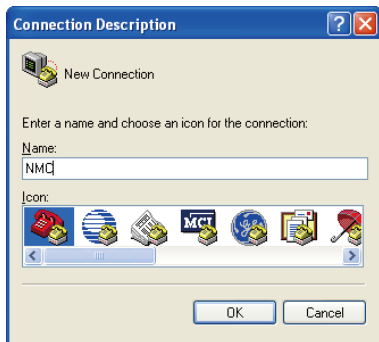


Configuring Network Management Card via Serial Port

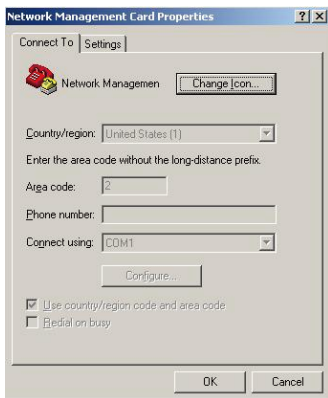
1. For Microsoft Windows XP or other Windows operation systems that support Hyper Terminal, click Start->Programs->Accessories ->Hyper terminal.



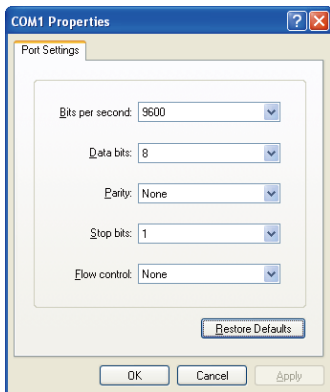
2. Enter a name and click OK.



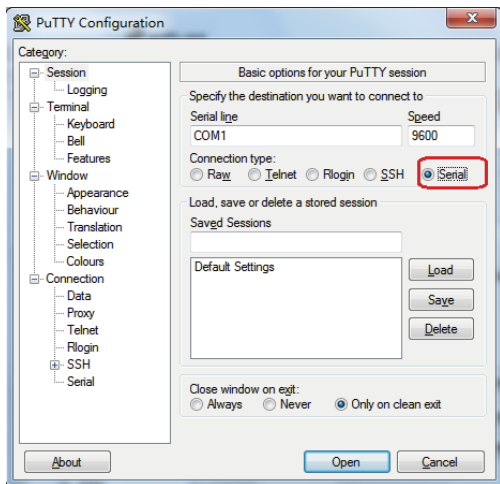
3. Select the correct COM port and click OK.



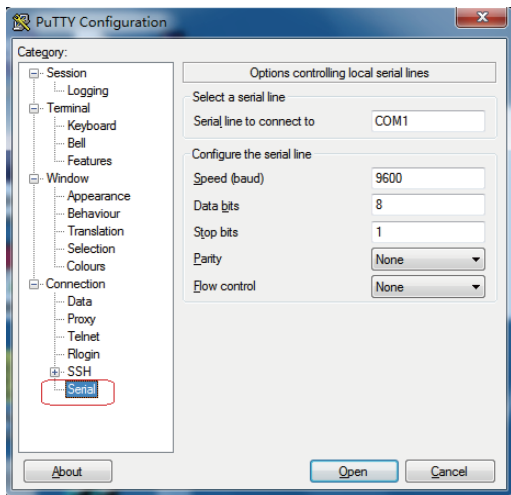
4. Configure the port setting as 9600 bps, 8 data bits, None (parity), 1 Stop bit and None Flow Control. Then click OK.



5. For Microsoft Windows XP above Windows version, communicate with serial port via serial port debug tool (Putty is used as example in this manual)。 Double click Putty setup icon, open Putty and select serial session.



6. Select “Serial” node on the left tree, and configure the parameters of the serial port on the right window: 9600 bps, 8 bits, None parity, 1 stop bit and None flow control. And then open the putty serial communication window by click “open” button.



7. Enter the default password “password” and the Network Management Card Configuration Menu will display on the screen.

NMC Version x.x.x.x

```
+-----+
|               Network Management Card Configure Menu               |
+-----+
```

Password: _

8. Enter “1” to enter the Agent Configuration Menu.

```
+-----+
|               Network Management Card Configure Menu               |
+-----+
1. IP Configurations
2. Pass Through
3. Reset Configuration to default
4. Restart
5. Change Password
0. Exit
```

Please Enter Your Choice :

9. Assign an IP address and set the correct Subnet Mask; Gateway; DHCP.

Please Enter Your Choice : 1

```
+-----+
|               IP Configure Menu               |
+-----+
MAC Address : 00:20:85:F7:10:1F
1. DHCP      : Enable
   IP address : 172.18.127.45
   Subnet mask : 255.255.255.0
   Gateway    : 172.18.127.1
   Primary DNS address : 172.18.121.17
   Secondary DNS address : 151.110.232.21
7. IPv6 Configure
0. Return to previous menu
```

Please Enter Your Choice : _

Control the Network Management Card/UPS via Web Browser

Start your Web Browser; enter the Network Management Card IP address in the Address text box, the Network Management Card Web page will be shown on the Browser.

Some setting pages need to enter the user name and password to log in. The default user name is “root” and default password is “password”.



Address: http://172.16.127.52/

NETWORK MANAGEMENT CARD FOR UPS

UPS L1NE
Location: Office
15/11/2011 11:08:45

UPS Monitoring

- UPS Status
- UPS Alarm
- UPS Parameters
- UPS Powered Devices
- UPS Identification

UPS Management

- UPS Battery Test
- UPS Battery Test Schedule
- SNMP TRAP Receivers
- UPS Configuration
- UPS Control
- UPS Shutdown
- Shutdown Schedule

Settings

- NMC System
- Reboot System
- Date and Time
- SNMPv3 USM Table
- Email Notifications
- Firmware Upload
- File Management

Log

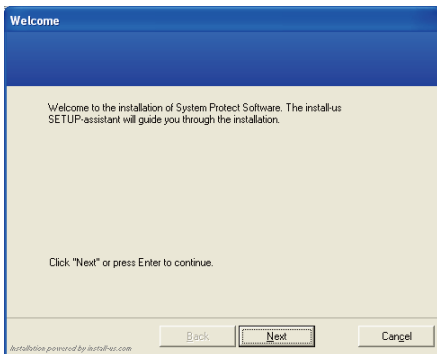
- UPS Log
- Event Log
- System Log

UPS Monitoring > UPS Status

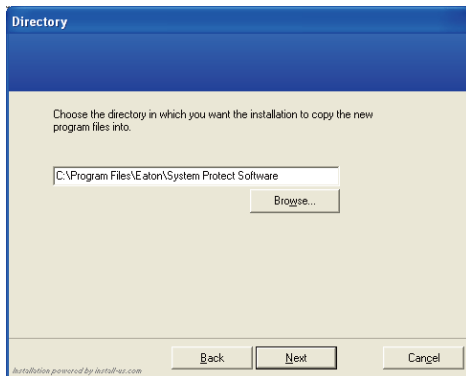
UPS Status		Line
UPS Temperature		34.9 °C
Input		
Voltage	224.5 V	
Frequency	50.0 Hz	
Output		
Load(%)	0	
Voltage	221.5 V	
Frequency	50.1 Hz	
Current	0.3 A	
Watt	0 W	
Battery		
Status	Battery Normal	
Capacity(%)	100	
Voltage	40.8 V	
Time On Battery	0 S	
Backup Time	20000 S	

System Protect Software (Windows) Setting

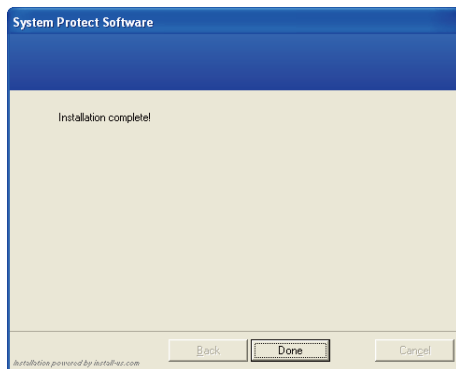
1. Double click the setup.exe



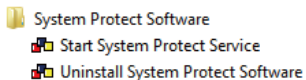
2. Display install software screen



3. Install complete

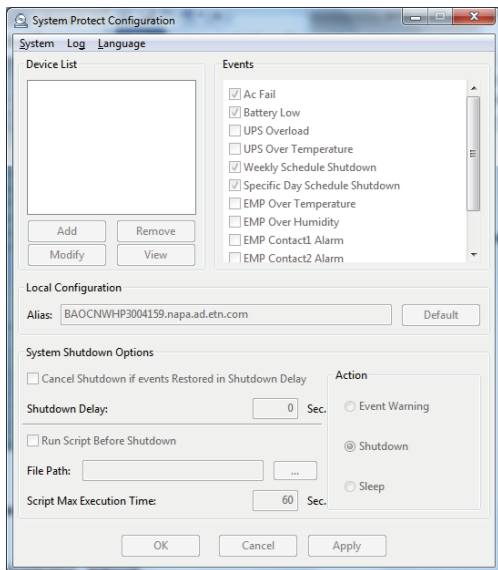


4. Start up from window (start->All Programs->System Protect Software->Start System Protect Service)

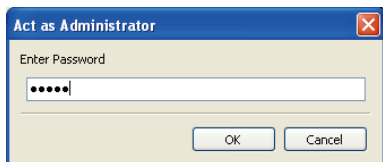


5. Setting the SPS.

Right click the SPS icon shown in system tray and select the “Configuration”

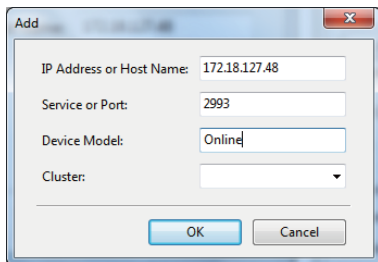


System->act as administrator, and enter the default password “admin”.



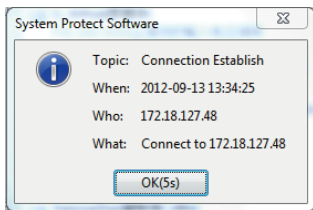
6. Add NMC

Click “Add” button, and then entering the popped window. Enter the NMC IP address and device model.



The screenshot shows a dialog box titled "Add" with a close button (X) in the top right corner. It contains four input fields: "IP Address or Host Name" with the value "172.18.127.48", "Service or Port" with the value "2993", "Device Model" with the value "Online", and "Cluster" which is a dropdown menu currently showing a downward arrow. At the bottom of the dialog are two buttons: "OK" and "Cancel".

The connection between SPS and NMC has established.



Other settings:

The screenshot shows the 'System Protect Configuration' window with the 'System' tab selected. The window is divided into several sections:

- Device List:** Contains a list with one entry: '172.18.127.48(2993) - Onlin'. Below the list are four buttons: 'Add', 'Remove', 'Modify', and 'View'.
- Events:** A list of events with checkboxes:
 - ☒ Ac Fail
 - ☒ Battery Low
 - ☐ UPS Overload
 - ☐ UPS Over Temperature
 - ☒ Weekly Schedule Shutdown
 - ☒ Specific Day Schedule Shutdown
 - ☐ EMP Over Temperature
 - ☐ EMP Over Humidity
 - ☐ EMP Contact1 Alarm
 - ☐ EMP Contact2 Alarm
- Local Configuration:** Includes an 'Alias' field with the value 'BAOCNWHP3004159.napa.ad.etn.com' and a 'Default' button.
- System Shutdown Options:**
 - ☐ Cancel Shutdown if events Restored in Shutdown Delay
 - Shutdown Delay: 0 Sec.
 - ☐ Run Script Before Shutdown
 - File Path: [empty field] ...
 - Script Max Execution Time: 60 Sec.
 - Action:** Radio buttons for 'Event Warning', 'Shutdown' (selected), and 'Sleep'.

At the bottom of the window are three buttons: 'OK', 'Cancel', and 'Apply'.

EMP Connection(optional)

The Environment Monitor Probe is a NMC option. It monitors the temperature and humidity of the UPS environment, and check the states of two external contacts. It can also send alarms (email, trap) by pre-set thresholds. Connection is made via the setting port on the NMC, the EMP is detected automatically. Configuration could be made via UPS configuration menu.

Network Management Card - Windows Internet Explorer

http://172.16.327.45/monitoring_uk.html

File Edit View Favorites Tools Help

Network Management Card

NETWORK MANAGEMENT CARD FOR UPS

OW-LINE
Local Area Office
01/01/2000 00:22:00

UPS Monitoring

- UPS Status
- UPS Alarm
- UPS Parameters
- UPS Powered Devices
- UPS Identification

UPS Management

- UPS Battery Test
- UPS Battery Test Schedule
- UPS UPS Receivers
- UPS Configuration
- UPS Control
- UPS Shutdown
- Shutdown Schedule

Settings

- NMC System
- Reboot System
- Date and Time
- SMTP/SMTPS User Table
- Email Notification
- Firmware Upload
- File Management

Logs

- UPS Log
- Event Log
- System Log

UPS Management > UPS Configuration

UPS

Over Load Set Point(%) 40

Over Temperature Set Point(°C) 50

Save

EMP Auto

Sensor	Description	Low Point	High Point
Temperature(°C)	EMP Temperature	15	50
Humidity(%)	EMP Humidity	50	90
Alarm-1	Alarm-1	Not Used	
Alarm-2	Alarm-2	Not Used	

Save

Local intranet

